

# OTAGO MUSEUM VENUES

EAT. PLAY. LEARN. MEET.



## Otago Museum is an elegant and distinctive venue for an experience that your guests will remember.

From cocktails surrounded by the skeletons of gigantic prehistoric birds, to canapés in the light-filled, soaring atriums, with 19 venues Otago Museum has a space for every audience and every occasion.

In two historic buildings situated on a tree-lined, grassy reserve, we house a collection of 1.5 million items and open our world-class galleries for sophisticated, catered events.

Enjoy presentations in our comfortable theatres, where guests can spend breaks in our beautiful galleries. Break down barriers in our science centre where catered evening gatherings come complete with 45 science interactives.

Relax with clients in the three-storey Tropical Forest filled with exotic butterflies, or conduct meetings in quiet, light-filled rooms and conservatories overlooking the trees.

Otago Museum has an experienced and professional venues team, where you can expect a polished experience, with all the little details taken care of. We work with Dunedin's premier caterers, food is freshly made, beautifully presented, handmade, and moreish.

In the heart of Dunedin, Otago Museum is more than just a venue; it is an experience.



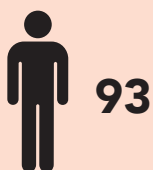


## In the galleries

We have four world-class galleries of varying sizes and themes, which we open for private, catered events in the evenings (5pm till late) and early mornings (before 10am). Events in our galleries are something your guests will remember; parties, cocktail functions, presentations, and receptions are even more special amongst our collections.

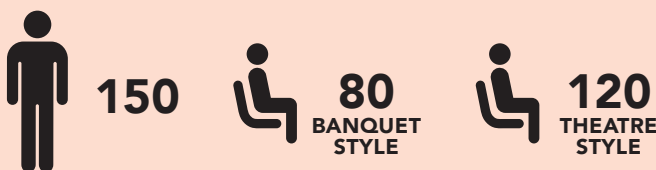
### Animal Attic

Weird and wonderful taxidermied creatures in a quirky, Victorian-inspired setting.



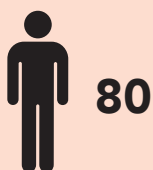
### Beautiful Science gallery

A sophisticated space in the world's first laser-activated gallery.



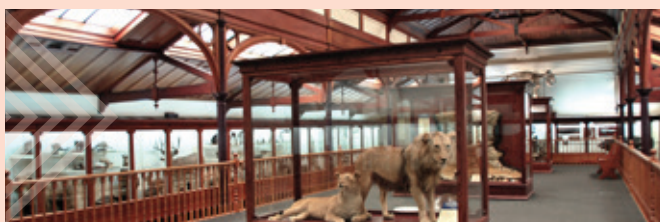
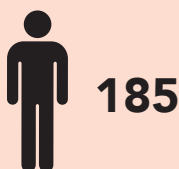
### Nature

Surrounded by the animals that filled Otago's land now and in the past.

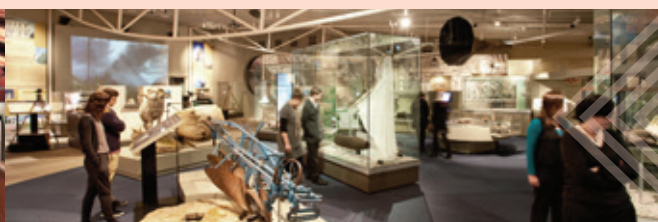


### Southern Land, Southern People

Prehistoric fossils and giant moa skeletons, and the stories of the people of the south.



Animal Attic



Southern Land, Southern People

## \$800 (ex gst) from 5pm till late.

Includes:

- Wifi
- Tables and tablecloths
- Chairs
- Lectern





Mamahi  
Roxbury  
Maerewhenua  
Ahuiri  
Waikaki

Tokomairiri  
Waiheke

Moeraki  
Otago

Teurururū  
Mōtoraki

Whakata  
Matakaka

## Only in a museum Atriums

The light-filled, high-ceilinged, marble spaces connecting the Museum's three floors. Perfect for balls, large functions, cocktail parties, conferences, presentations, and receptions, this is Dunedin's most sophisticated venue.

Looking out to the treetops from the third floor, and the sweeping grassy reserve lower down, this is a flawless backdrop for elegant evening events.

### Foyer

\$750 (ex gst) from 5pm till late



### Atrium Level 1

\$750 (ex gst) from 5pm till late



### Atrium Level 2

\$750 (ex gst) from 5pm till late



## All three levels \$2250 (ex gst) from 5pm till late.

Includes:

- Wifi
- Trestle tables and tablecloths
- Chairs
- Lectern
- Level 1 and 2, PA system
- Level 1 only, projector
- Venue host and tech start-up assistance at beginning of function
- Staff for set up, liquor service, and clean up





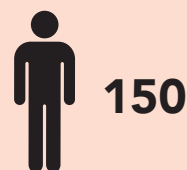
## Only in a museum Science Centre

If you want teams to talk to each other, clients to mingle, and a place where conversations are easy, Tūhura Otago Community Trust Science Centre is the place to host your next function.

## Tūhura Otago Community Trust Science Centre

Perfect for staff parties, team building, and large events, with 45 interactives, including a magnetic sculpture and an engineering table, this is a place where people can eat, play, learn, and meet.

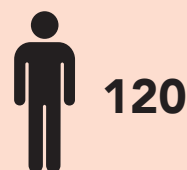
Adjacent to Tūhura is the Tropical Forest and the Perpetual Guardian Planetarium, which may also be opened up for your party. The planetarium is a theatre space with a 360° domed ceiling, offering an immersive viewing experience of constellations in our night skies.



**\$950 (ex gst) from 5pm till late**

## Tūhura's Tropical Forest

Come out of the Dunedin cold and enter the idyllic tropics! Where exotic butterflies flutter in flashes of iridescent colour, lush foliage blooms and fish play in the ponds under the waterfall, this three-storey venue is breathtaking. If you want a winter wedding, or a space to wow your clients, the Tropical Forest is perfect.



**\$800 (ex gst) from 5pm till late**



Includes:

- Wifi
- Tables with tablecloths
- Chairs
- Lectern
- Venue host and tech start-up assistance at beginning of function
- Staff for set up, liquor service, and clean up







# Only in a museum

## Theatres

Three theatre spaces ranging in size and style, great for seminars, presentations, lectures, and conferences. Guests can wander through our free galleries during breaks, get a coffee from our onsite café, and our caterers can provide snacks, meals, and treats to your specifications.

### Hutton Theatre

A large, multipurpose theatre, seating 230. On the ground floor with easy accessibility for all guests, this theatre has a modern and user-friendly PA system.

Includes:

- Wifi
- Ceiling-mounted data projector
- Wall-mounted projection screen
- Microphones
- Built-in sound system
- Lectern
- Whiteboard with pens and eraser
- Water
- Trestle tables and tablecloths
- Chairs
- Video conferencing
- Venue host and tech start-up assistance at beginning of function



**300**



**\$590 (ex gst)**



**230**  
THEATRE  
STYLE



**\$360 (ex gst)**



**120**  
BANQUET  
STYLE



**\$590 (ex gst)**

### Barclay Theatre

This contemporary lecture-style theatre is in the heart of the Museum. A lovely wood-paneled room with comfortable seating, great for lectures, presentations or conferences.

Includes:

- Wifi
- Ceiling-mounted data projector
- Wall-mounted projection screen
- Microphones
- Built-in sound system
- Lectern
- Whiteboard with pens and eraser
- Water
- Trestle tables and tablecloths
- 72 chairs (fixed)
- Venue host and tech start-up assistance at beginning of function



**72**  
THEATRE  
STYLE



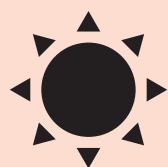
**\$460 (ex gst)**



**\$290 (ex gst)**



**\$460 (ex gst)**



**FULL DAY**  
8.30am – 5pm



**HALF DAY**  
8.30am – 12.30pm  
1pm – 5pm



**EVENING**  
5pm – late



**STANDING  
CAPACITY**



**SEATED  
CAPACITY**



# Only in a museum

## Rooms

### Kākāpo Room Main Museum

Perfect for smaller gatherings, board meetings, seminars, or presentations, or hired with the Hutton Theatre as a break-out space.

Includes:

- Wifi
- Wall-mounted projection screen
- Whiteboard with pens and eraser
- Water
- Trestle tables and tablecloths
- Chairs
- Venue host and tech start-up assistance at beginning of function



**50**  
THEATRE  
STYLE



**\$290** (ex gst)



**28**  
BANQUET  
STYLE



**\$165** (ex gst)



**22**  
BOARDROOM  
STYLE



**\$290** (ex gst)

### Otago Community Trust Conservatory H D Skinner Annex

This room is bathed in natural light with floor to ceiling windows and French doors opening to the garden and spacious grassy reserve. Suitable for smaller gatherings, functions, conference break-out sessions, presentations, and seminars, this is a lovely bright space your guests will enjoy being in.

Includes:

- Wifi
- Whiteboard with pens and eraser
- Water
- Trestle tables and tablecloths
- Chairs
- Projector
- Venue host and tech start-up assistance at beginning of function



**45**



**\$360** (ex gst)



**45**  
THEATRE  
STYLE



**\$200** (ex gst)



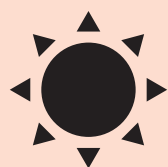
**28**  
BANQUET  
STYLE



**\$360** (ex gst)



**22**  
BOARDROOM  
STYLE



**FULL DAY**  
8.30am – 5pm



**HALF DAY**  
8.30am – 12.30pm  
1pm – 5pm



**EVENING**  
5pm – late



**STANDING  
CAPACITY**



**SEATED  
CAPACITY**



## Ted McCoy Room H D Skinner Annex

Suited for interviews, meetings, and presentations, this room is filled with natural light and is a beautifully renovated historic space.

Includes:

- Wifi
- TV screen that can be connected to a laptop
- Whiteboard with pens and eraser
- Water
- Four trestle tables and tablecloths
- Chairs
- Venue host and tech start-up assistance at beginning of function



**\$200** (ex gst)



**\$140** (ex gst)



**\$200** (ex gst)

## Theomin Balcony H D Skinner Annex

An enclosed upstairs balcony that overlooks the Museum reserve, this is a lovely space for cocktail functions, conference breakout sessions, and elegant dining experiences.

Includes:

- Wifi
- Built-in sound system
- Whiteboard with pens and eraser
- Water
- Trestle tables and tablecloths
- Chairs
- Projector
- Venue host and tech start-up assistance at beginning of function



**45**



**\$360** (ex gst)



**45**  
THEATRE  
STYLE



**\$200** (ex gst)



**35**  
BANQUET  
STYLE



**\$360** (ex gst)



**22**  
BOARDROOM  
STYLE



**FULL DAY**  
8.30am – 5pm



**HALF DAY**  
8.30am – 12.30pm  
1pm – 5pm



**EVENING**  
5pm – late



**STANDING  
CAPACITY**



**SEATED  
CAPACITY**



## Postmaster Gallery H D Skinner Annex

A contemporary gallery space at the heart of an iconic heritage listed building, this is a wonderful venue for exhibitions, cocktail parties, lectures, launches, presentations, receptions, weddings, or dinners.

Includes:

- Wifi
- Built-in sound system
- Whiteboard with pens and eraser
- Water
- Trestle tables and tablecloths
- Chairs
- Projector
- Venue host and tech start-up assistance at beginning of function



100



\$400 (ex gst)



70  
THEATRE  
STYLE



\$260 (ex gst)



72  
BANQUET  
STYLE



\$400 (ex gst)

## Additional information

### The Museum experience

In addition to the galleries we open for private events, we have six other galleries that are free to the public. For daytime events, your guests are welcome to spend breaks roaming our collection, and, for after-hours events, let us know if you would like to discuss after hours tours or access.

Our Café is open from 9am till 5pm, with a full menu and great coffee.

### Otago Museum catering

We work with the best caterers in Dunedin, and can match your event, needs, and priorities to create the perfect menu.

Our preferred caterers use fresh local ingredients and can provide everything from snacks to three course meals. From elegant dining and sophisticated canapés, to hearty and home cooked, we will pair you with the right kitchen for your needs. We work closely with our suppliers to create a bespoke menu for your event. We have an extensive beverage list and can tailor this for you.

### Resources

We will ensure that your event is perfect and can connect you with trusted suppliers for any additional needs you may have, from DJs and bands, to interior decorators to add those extra touches that make your night special.

### Otago Museum venues staff

We pride ourselves on our experience, professionalism, customer service, and eye for detail, and we bring your event together seamlessly. We can provide wait staff, bar staff, security, and event managers, as well as science communicators, DJs, and other entertainment – talk to us about your perfect event.

### Access

All venues and galleries at Otago Museum are wheelchair accessible, although some of the spaces within these may not be. Speak to us, and we can discuss your needs.

### Location

In the heart of Dunedin and beside the university, it is only a 15-minute walk to the Octagon and we are close to some of our city's best bars and restaurants, comfortable accommodation, public transport and parking, and other attractions.



FULL DAY  
8.30am – 5pm



HALF DAY  
8.30am – 12.30pm  
1pm – 5pm



EVENING  
5pm – late










STANDING  
CAPACITY



SEATED  
CAPACITY



# Otago Museum at a glance

	 STANDING	 THEATRE	 BANQUET	 BOARDR.	 FULL DAY	 HALF DAY	 EVENING
Atrium Foyer	350	-	210	-	-	-	\$750
Atrium Level 1	300	-	150	-	-	-	\$750
Atrium Level 2	200	-	100	-	-	-	\$750
Atrium Total	850	-	460	-	-	-	\$2250
Barclay Theatre	-	72	-	-	\$460	\$290	\$460
Hutton Theatre	300	230	120	-	\$590	\$360	\$590
Kākāpō Room	50	50	28	22	\$290	\$165	\$290
Animal Attic	93	-	-	-	-	-	\$800
Beautiful Science Gallery	150	120	80	-	-	-	\$800
Nature	80	-	-	-	-	-	\$800
Southern Land, Southern People	185	-	-	-	-	-	\$800
Tūhura Otago Community Trust Science Centre	150	-	-	-	-	-	\$950
Tūhura's Tropical Forest	120	-	-	-	-	-	\$800
Otago Community Trust Conservatory	45	45	28	22	\$360	\$200	\$360
Postmaster Gallery	100	70	72	-	\$400	\$260	\$400
Ted McCoy Room	-	-	-	10	\$200	\$140	\$200
Theomin Balcony	45	45	35	22	\$360	\$200	\$360

All prices exclude GST